

READY FOR OCCUPANCY



C5 I-65 PARK SOUTH LOGISTICS CENTER AT WHITELAND BUILDING 1

185 Bob Glidden Boulevard, Whiteland, Indiana 46184

CBRE

LEASING AGENT



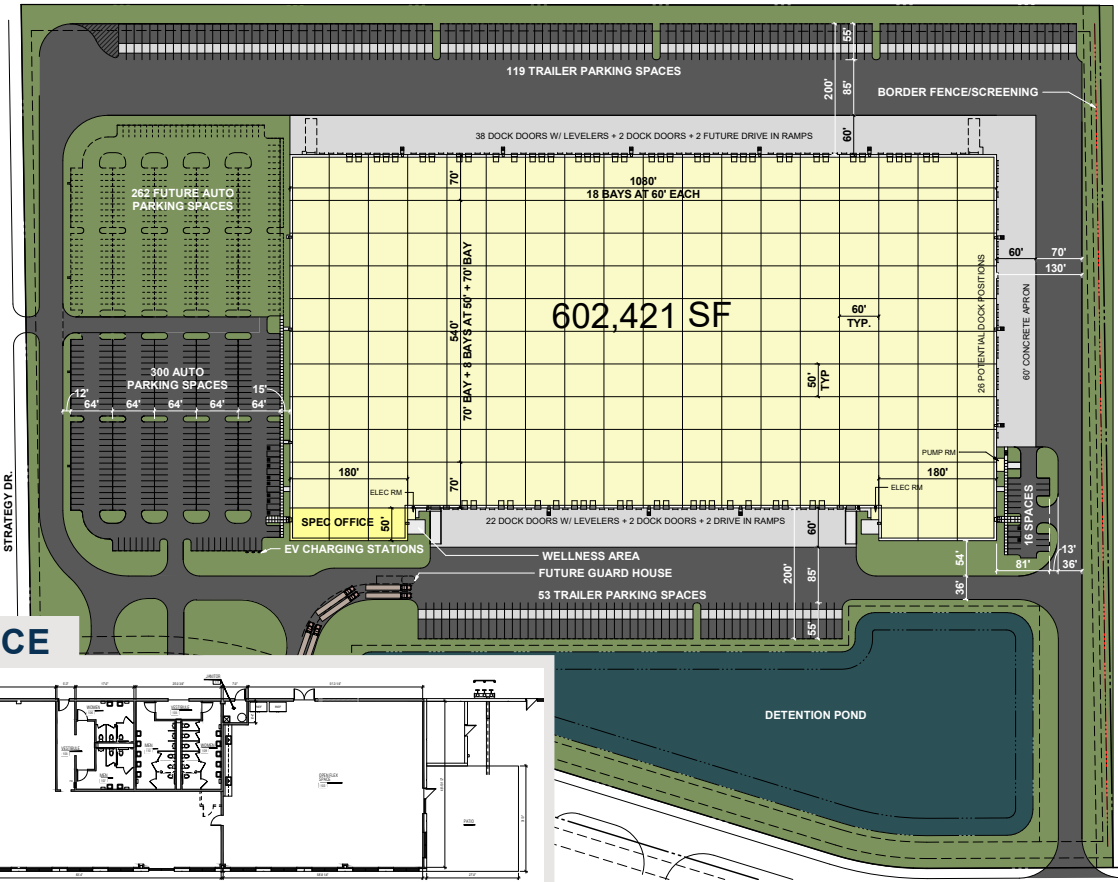
DEVELOPER

C5 I-65 PARK SOUTH LOGISTICS CENTER AT WHITELAND BUILDING 1

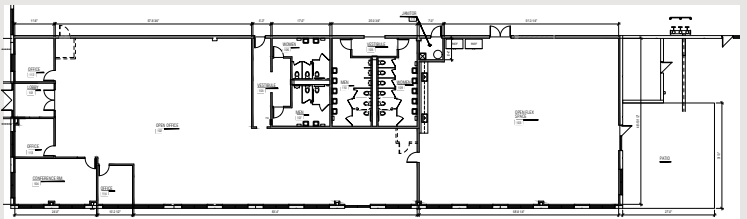
185 Bob Glidden Boulevard, Whiteland, Indiana 46184

The I-65 Park South Logistics Center at Whiteland is located in the highly desirable South Submarket of Indianapolis Indiana which includes the cities of Greenwood, Whiteland and Franklin. With immediate access to I-65 via modern infrastructure, the latest in distribution center design, proximity to one of the highest quality labor pools of any comparable location the facility checks every site selection box.





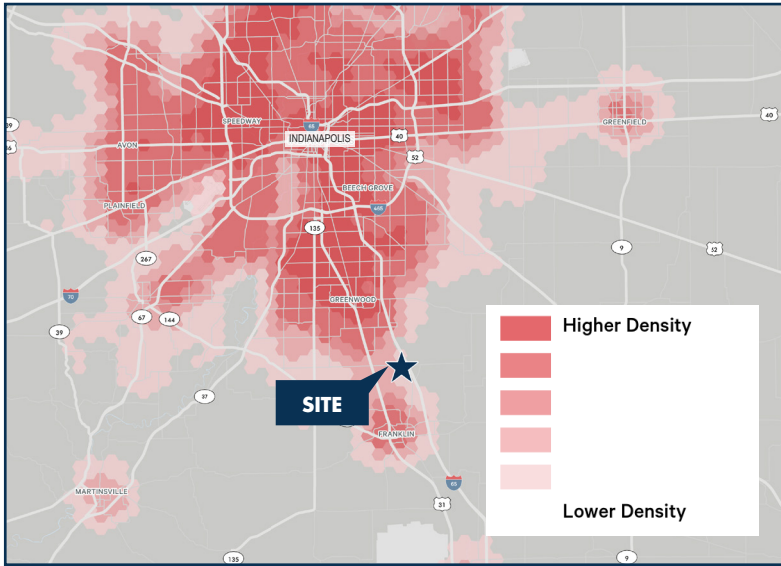
SPEC OFFICE



BUILDING 1 SPECIFICATIONS

- Building Size** ± 602,421 SF
- Clear Height** 40 feet
- Office Size** ±8,840 SF
- Column Spacing** 60' wide x 50' deep (typical); 60' wide x 70' deep (staging)
- Site Area** ± 44.3 acres
- Loading** Three-sided cross-dock configuration
- Dock High Doors** (60) 9' x 10' insulated metal doors with dual window kits
(44) knock outs for future doors
- Drive-In Doors** (2) – 14' x 16' insulated metal, electronically operated overhead doors
(2) future drive-in ramps
- Truck Court Depth** 200' including a 55' deep designated trailer parking area
- Auto Parking** 578 spaces, (317 existing)
- Trailer Storage** 172 spaces
- Electrical Service** (2) 3000 amp, 277/480 volt, 3 phase
- Floor System** 8" thick unreinforced concrete slab
- Sprinkler System** ESFR

MANUFACTURING/TRANSPORTATION LABOR DENSITY



Within 30 Minute Drive



809,972

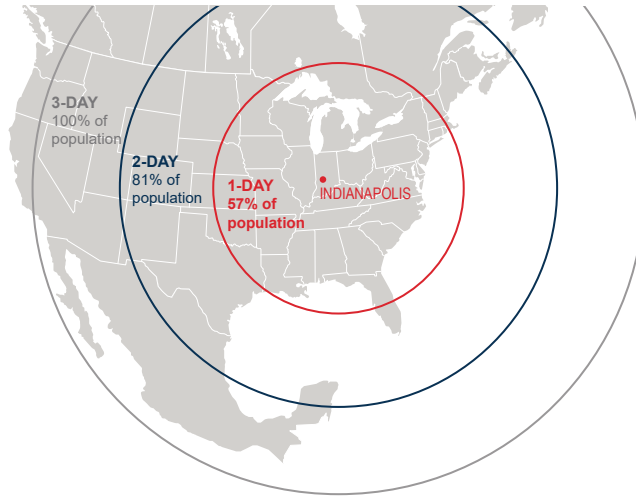
Overall Labor Force



158,641

Manufacturing, Transportation & Warehousing Skill Set

DAYS TRUCK DRIVE TO/FROM INDIANAPOLIS



Ranked 2nd in U.S. for lowest cost of doing business

Home to FedEx's 2nd largest hub located at the Indianapolis International Airport

Top airport ranked by J.D. Powers

8th largest cargo hub in the U.S.

Ranked 9th in the U.S. for most favorable business tax climate and 1st in the Midwest



Doug Armbruster

O 859.287.3707
C 513.235.3933

darmbruster@c5ip.com



Andrew Morris

O 317.269.1015
C 317.490.2402

andrew.morris@cbre.com

[DRONE VIDEO](#)

[WEBSITE](#)

Jeremy Woods, CCIM

O 317.269.1016
C 317.508.9111

jeremy.woods@cbre.com

© 2023 Core5 Industrial Partners, LLC. All rights reserved. CORE5, CORE5 INDUSTRIAL PARTNERS, and the stylized "C" CORE5 INDUSTRIAL PARTNERS design/logo are service marks of Core5 Industrial Partners, LLC for its real estate services, namely, acquisition, rental, brokerage, development, leasing, and management of industrial real estate property. These marks may not be used without express permission of Core5 Industrial Partners, LLC.

© 2023 CBRE, Inc. All rights reserved. This information has been obtained from sources believed reliable, but has not been verified for accuracy or completeness. You should conduct a careful, independent investigation of the property and verify all information. Any reliance on this information is solely at your own risk. CBRE and the CBRE logo are service marks of CBRE, Inc. All other marks displayed on this document are the property of their respective owners, and the use of such logos does not imply any affiliation with or endorsement of CBRE. Photos herein are the property of their respective owners. Use of these images without the express written consent of the owner is prohibited.