



CORE5 LOGISTICS CENTER AT LAUGHMAN FARMS

Morgan Lane, York, PA 17406

CBRE

LEASING AGENT

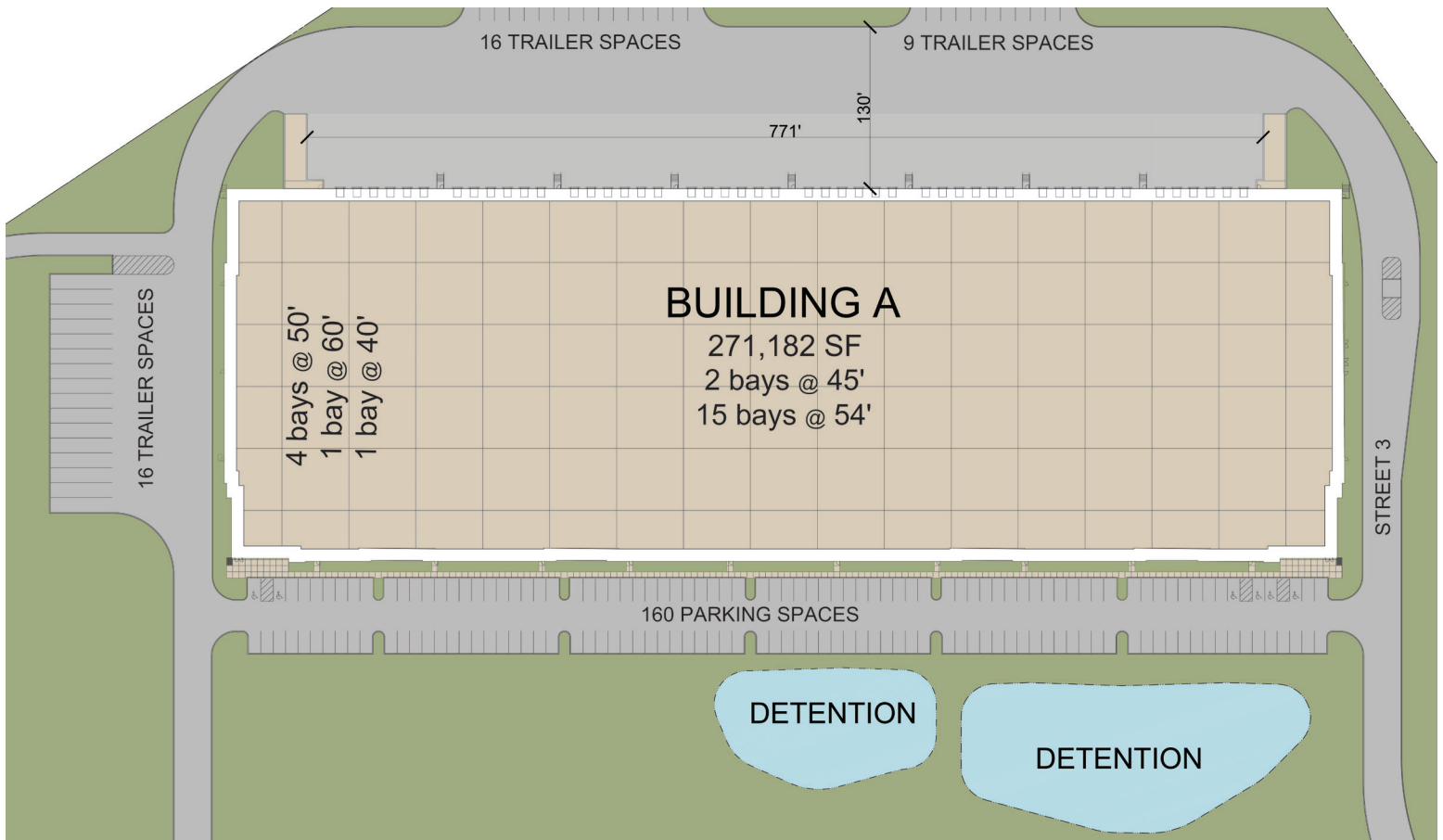


DEVELOPER

CORE5 LOGISTICS CENTER AT LAUGHMAN FARMS

BUILDING A

223 Morgan Lane, York, PA 17406



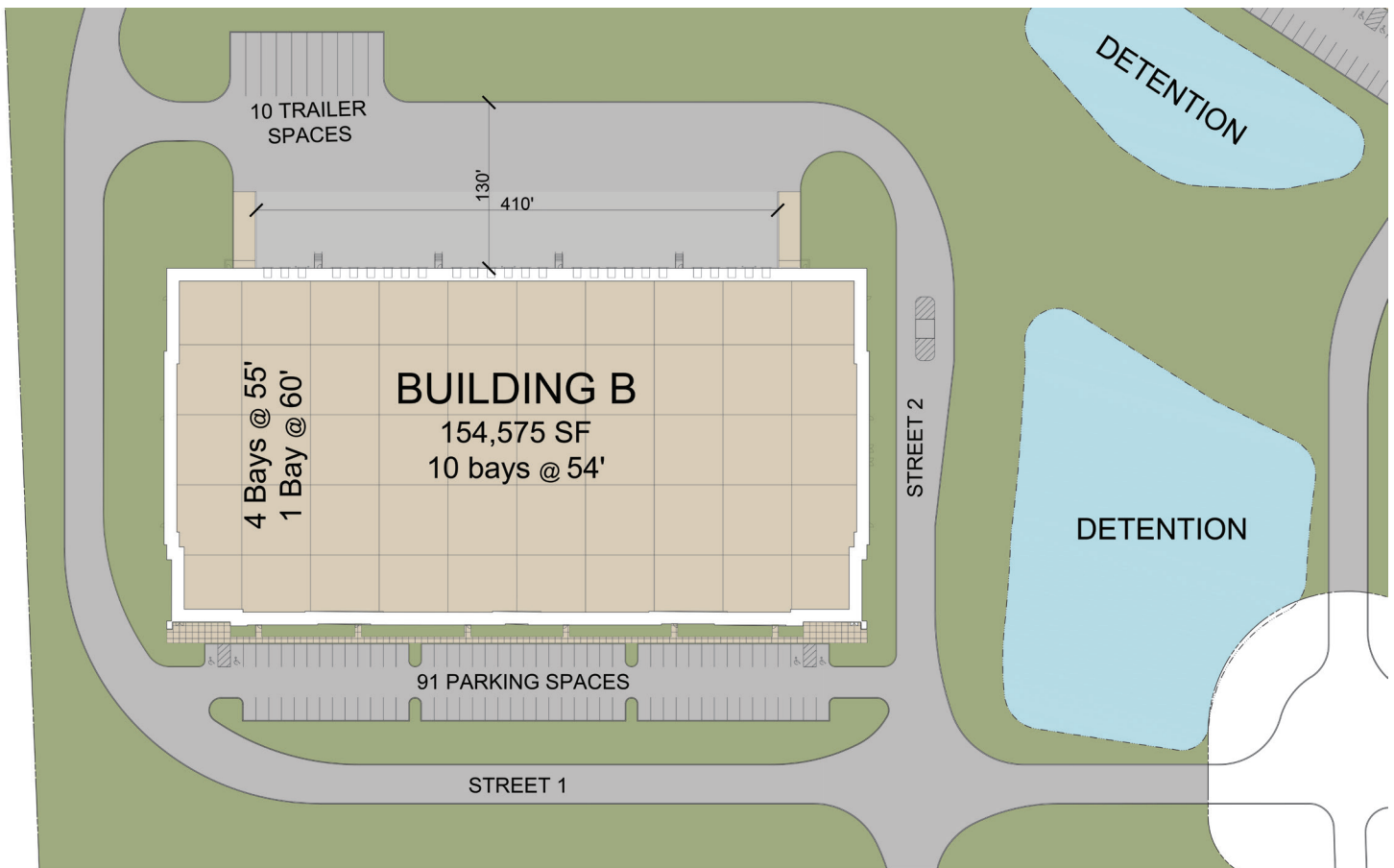
BUILDING A SPECIFICATIONS

Square Footage	271,182 SF	Dock High Doors	48 – 9' x 10' dock high doors
Configuration	Rear load	Drive-In Doors	2 – 14' x 16' drive-in doors
Column Spacing	1 bay 60' x 54' 1 bay 40' x 54' 4 bays at 50' x 54'	Truck Court Depth	130' concrete truck apron
Slab Thickness	7" conventional slab	Auto Parking	160 auto spaces
Clear Height	36' clear height	Trailer Parking	41 trailer spaces
		Sprinkler System	ESFR sprinkler system

CORE5 LOGISTICS CENTER AT LAUGHMAN FARMS

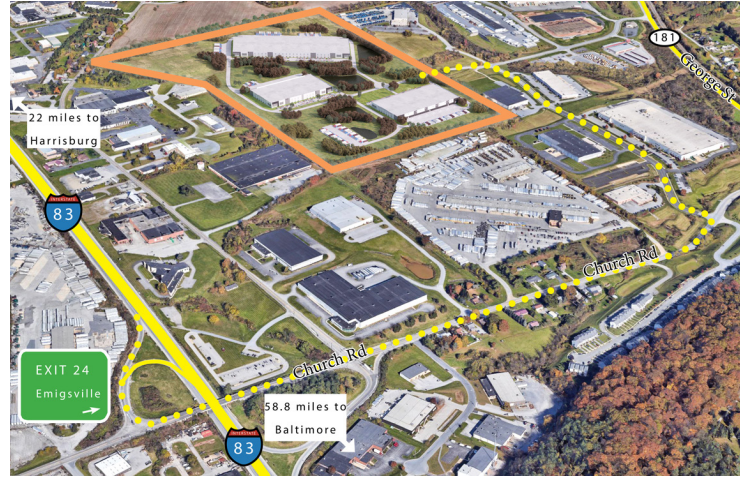
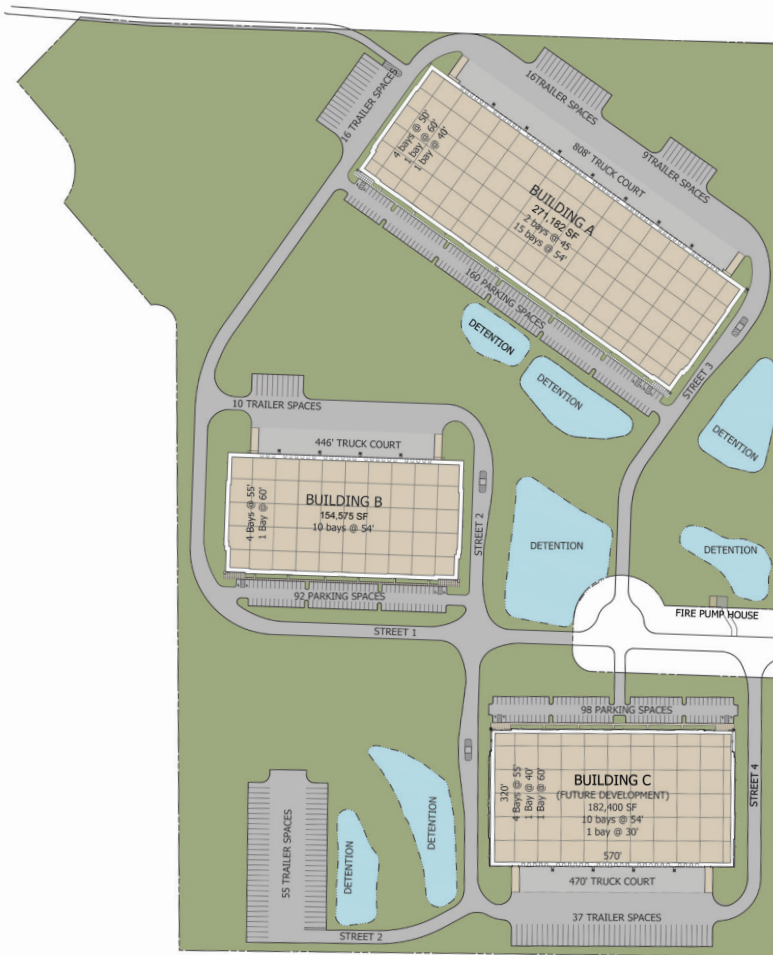
BUILDING B

231 Morgan Lane, York, PA 17406

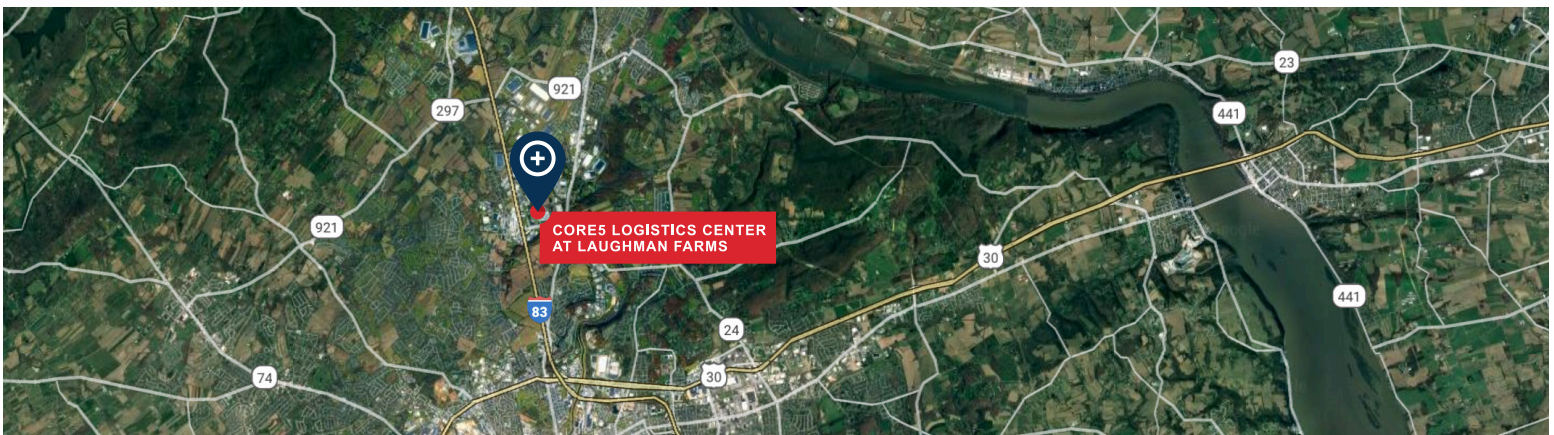


BUILDING B SPECIFICATIONS

Square Footage	154,575 SF	Drive-In Doors	2 – 14' x 16' drive-in doors
Configuration	Rear load	Truck Court Depth	130' concrete truck apron
Column Spacing	1 bay 60' x 54' 4 bays 60' x 54'	Auto Parking	91 auto spaces
Slab Thickness	7" conventional slab	Trailer Parking	10 trailer spaces
Clear Height	36' clear height	Sprinkler System	ESFR sprinkler system
Dock High Doors	26 – 9' x 10' dock high doors		



I-83	0.09 miles
I-81	26.2 miles
I-76	46.6 miles
Route 30	3.9 miles
FedEx Hub - Lewisberry	13.1 miles
UPS Hub - 19th Street	22.1 miles
Norfolk Southern Rutherford	27.2 miles
Port of Baltimore	59.6 miles
NY/NJ Port	169 miles



Paul Pontius
Vice President Investments

O 717.230.1839
C 267.997.6851

ppontius@c5ip.com



Michael Hess
Senior Vice President

O 717.540.2705
C 717.649.5209

michael.hess@cbre.com

Patrick Lafferty
Senior Vice President

O 717.540.2704
C 717.940.2131

patrick.lafferty@cbre.com

Bart D. Anderson
Senior Vice President

O 717.540.2706
C 717.756.2651

bart.anderson@cbre.com