



BOURBON LOGISTICS CENTER

Louisville, Kentucky



LEASING AGENT

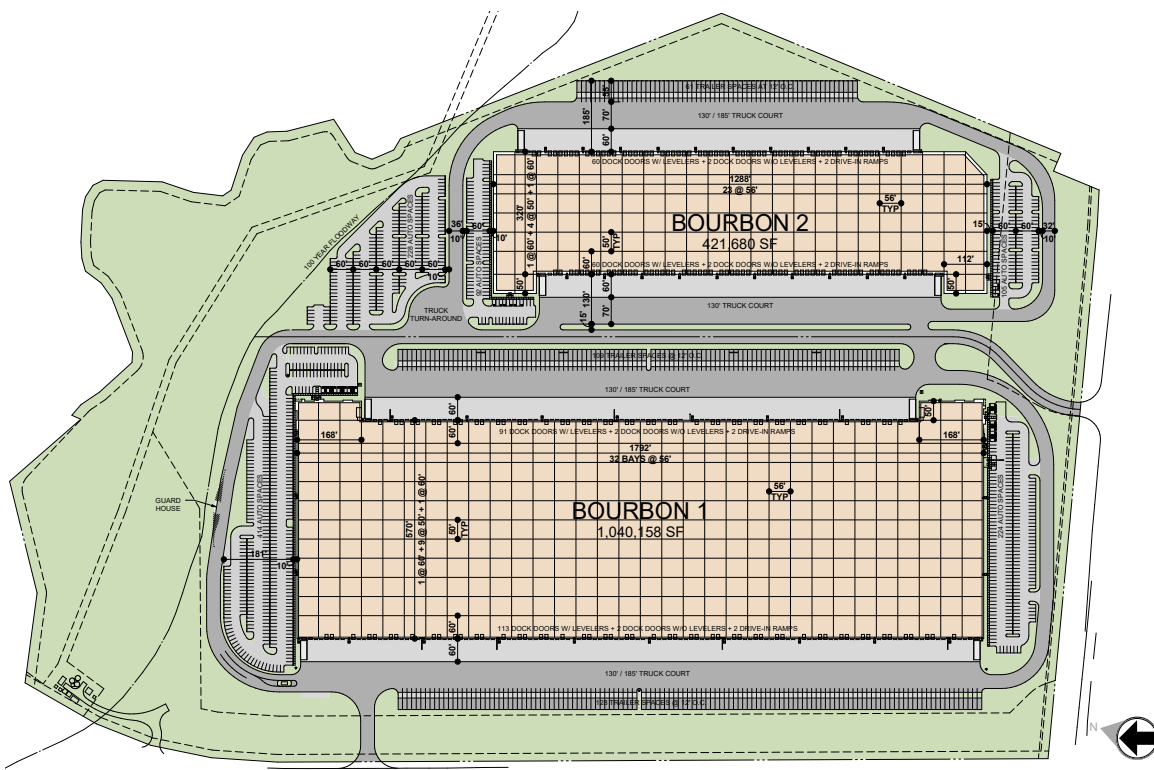
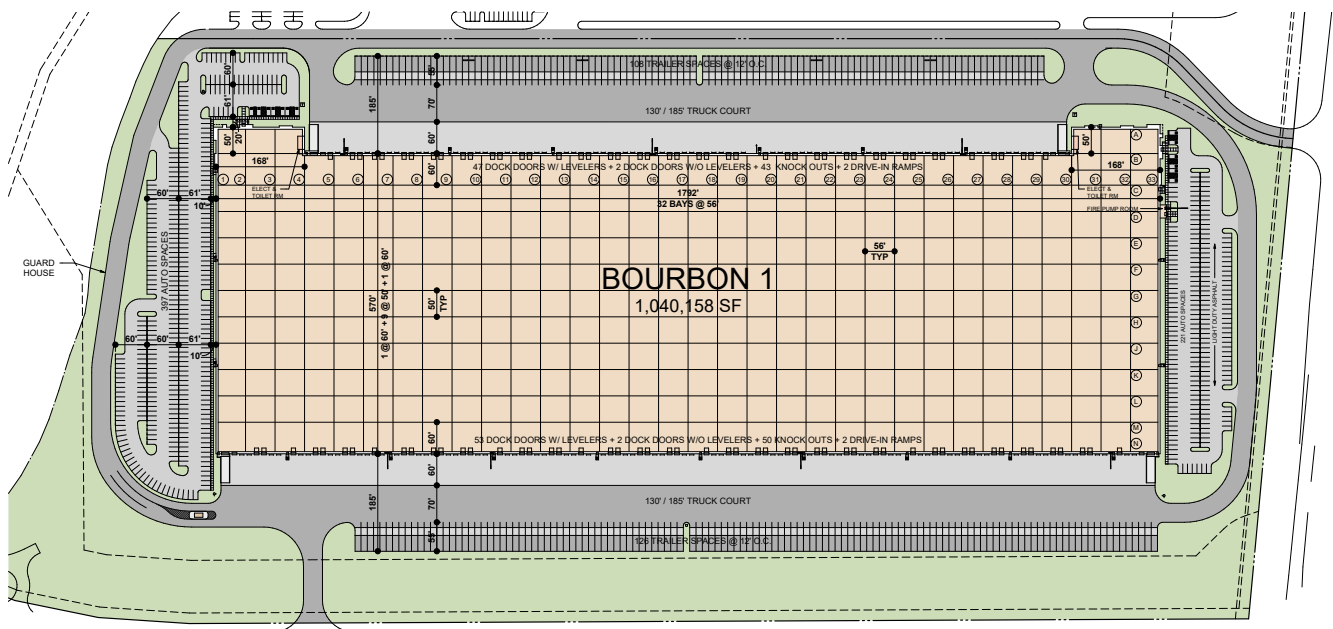


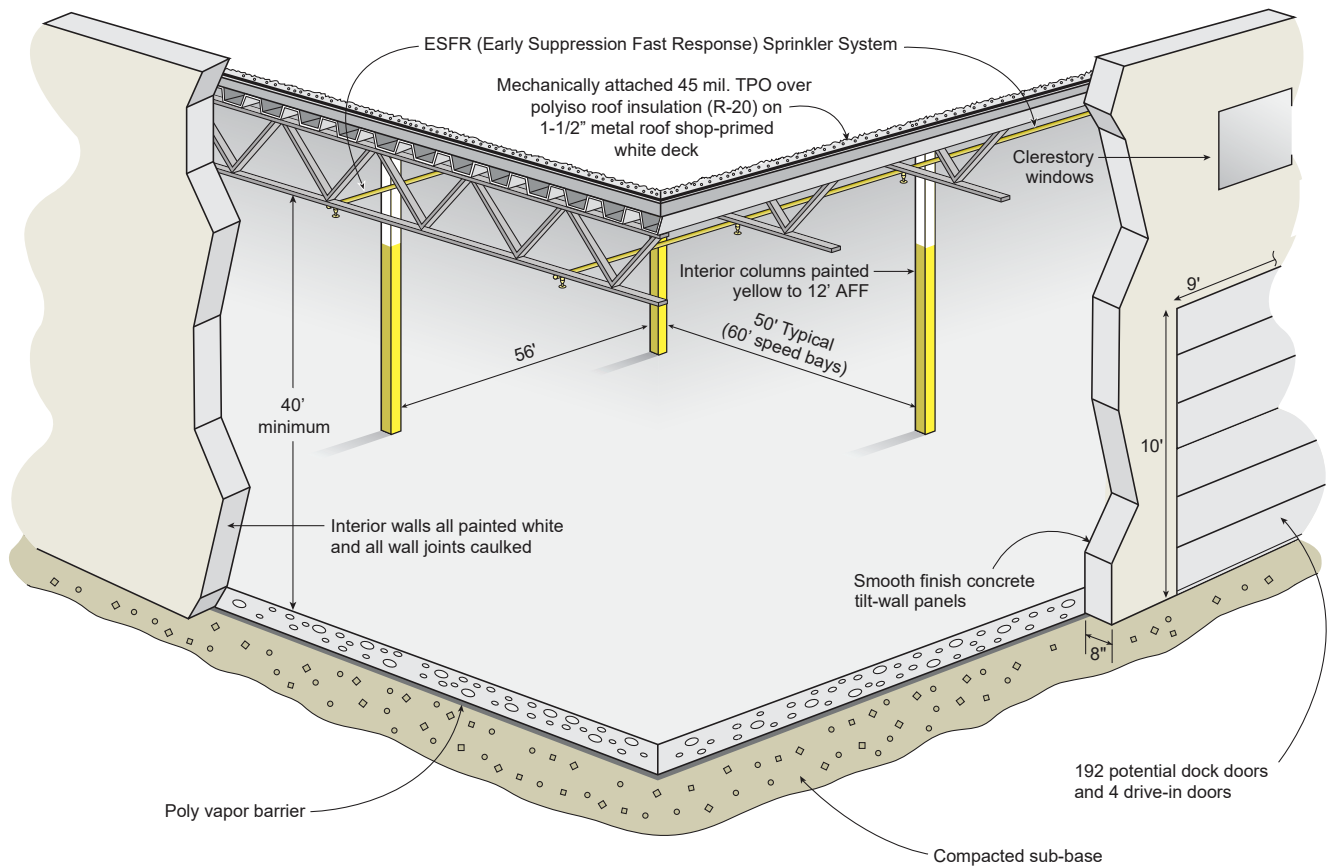
DEVELOPER

BOURBON LOGISTICS CENTER

Louisville, Kentucky

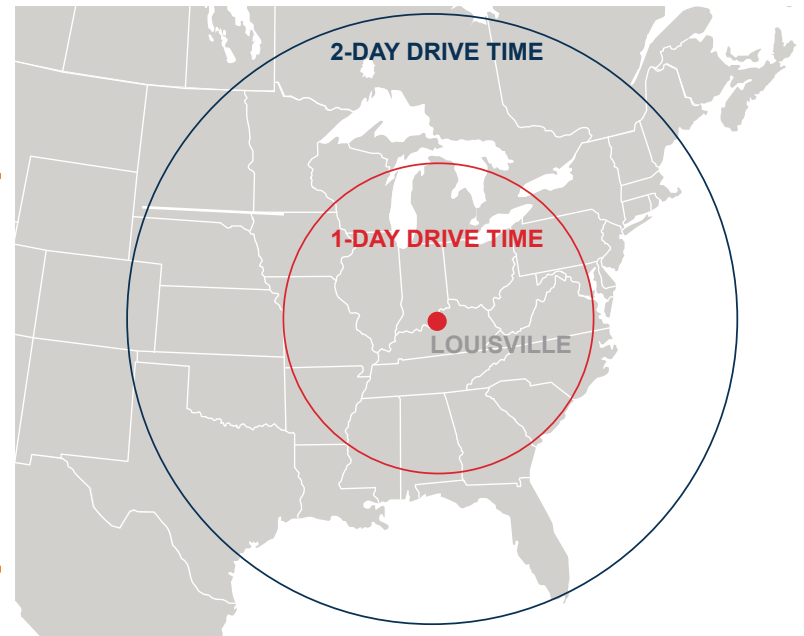
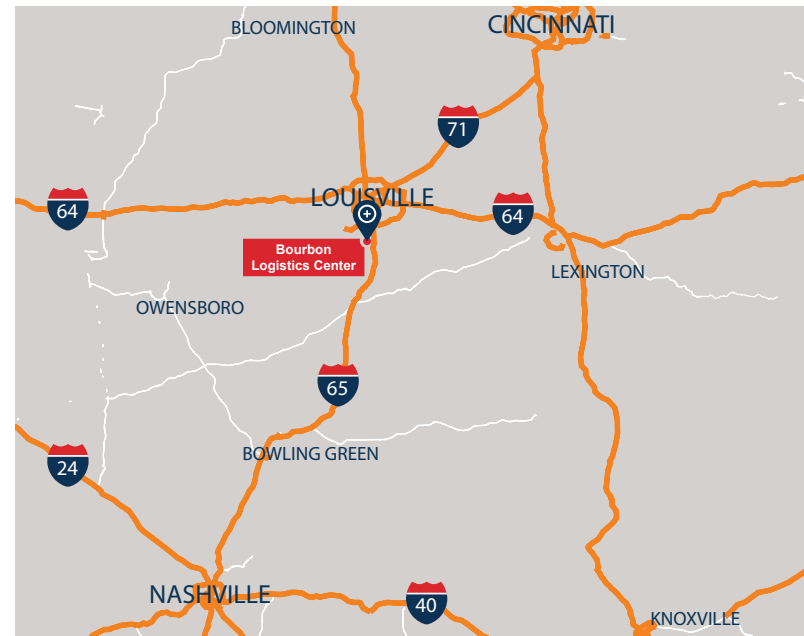
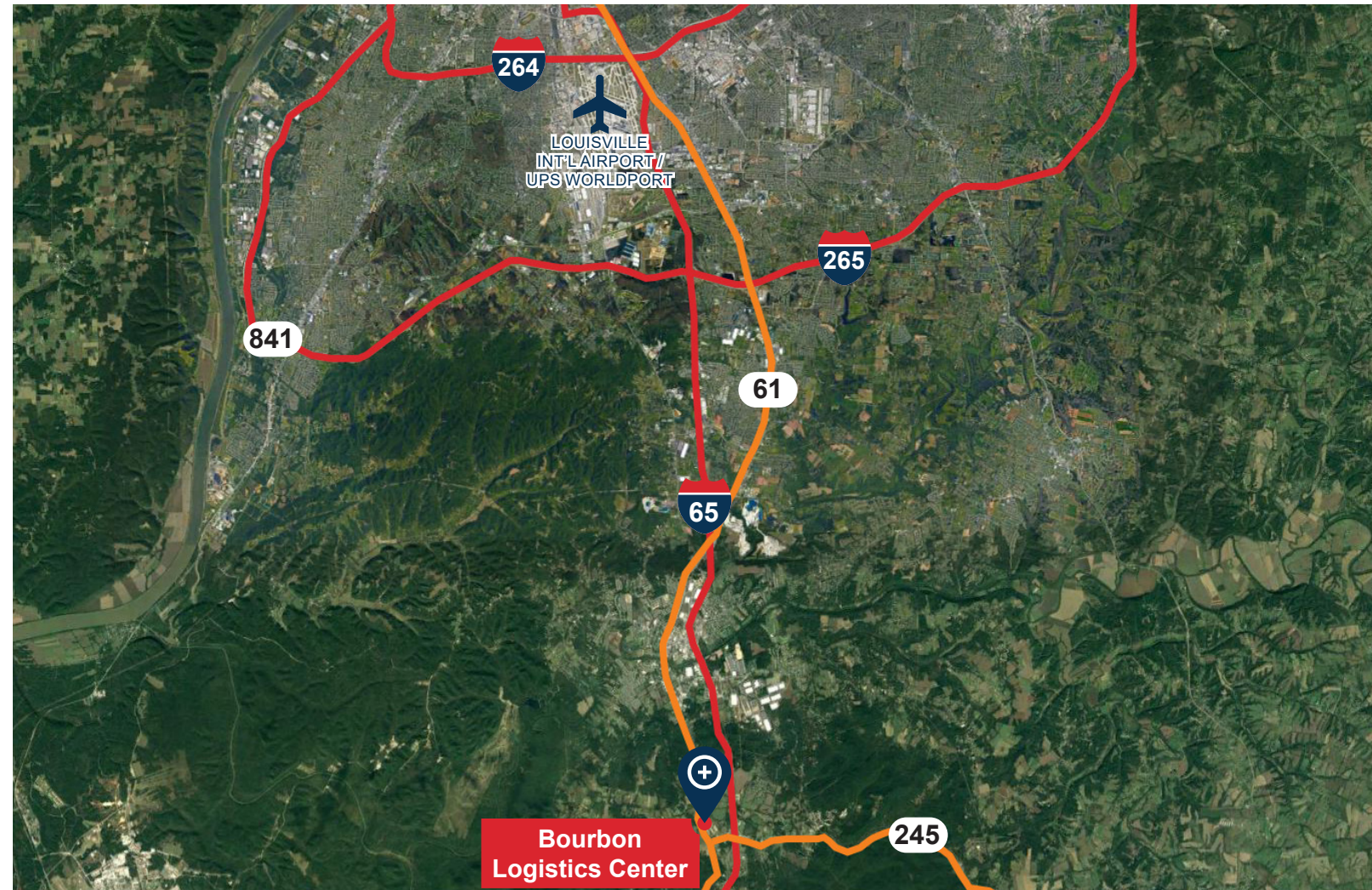
Bourbon Logistics Center is positioned less than one mile from I-65 at KY-245 in Shepherdsville, Kentucky. The location provides superior access to multiple markets. UPS Worldport is 20 minutes from the site, providing strategic logistics opportunities to the end-user.





BUILDING SPECIFICATIONS - BOURBON 1

Square Footage	1,040,158 SF
Site Area	49.81 acres
Column Spacing	50' wide x 56' deep, with 60' speed bays
Clear Height	40'
Dock Doors	207 potential dock positions (100 positions have doors and levelers; 4 positions only have doors)
Drive-In Doors	4
Truck Court Depth	185'
Auto Parking	638 spaces (expandable)
Trailer Storage	237
Roof	TPO system (R-20)
Sprinkler	ESFR sprinkler system



Doug Armbruster
 Senior Vice President and Managing Director
 O 859.287.3707
 C 513.235.3933
darmbruster@c5ip.com



Powell Spears, SIOR
 Managing Director
 O 502.394.2509
 C 502.419.7391
powell.spears@am.jll.com

Matt Hartlage, SIOR
 Executive Vice President
 O 502.394.2517
 C 502.807.5339
matt.hartlage@am.jll.com