



CORE5 LOGISTICS CENTER AT BONNIE VIEW

Dallas, TX 75241

CBRE

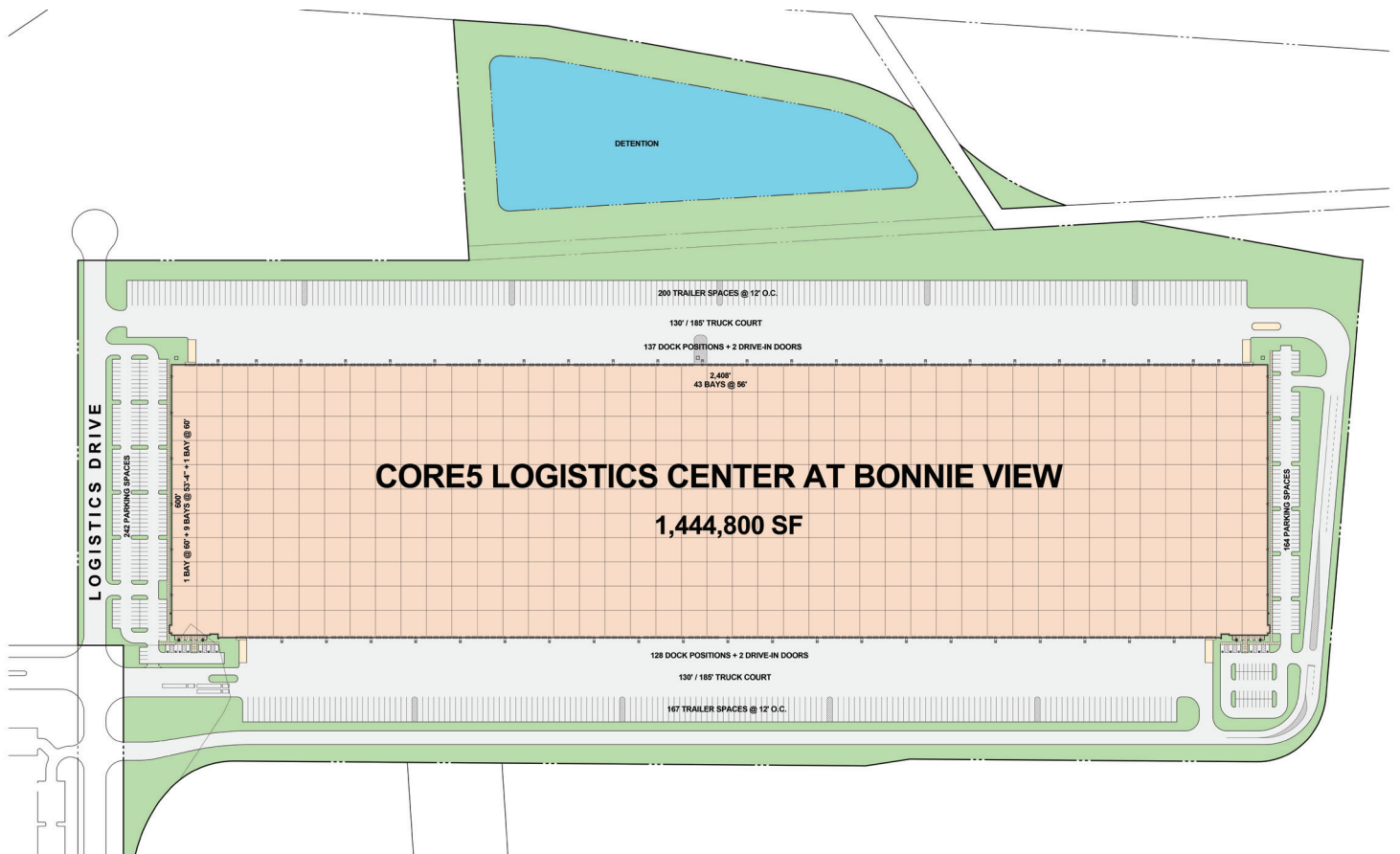
LEASING AGENT



DEVELOPER

CORE5 LOGISTICS CENTER AT BONNIE VIEW

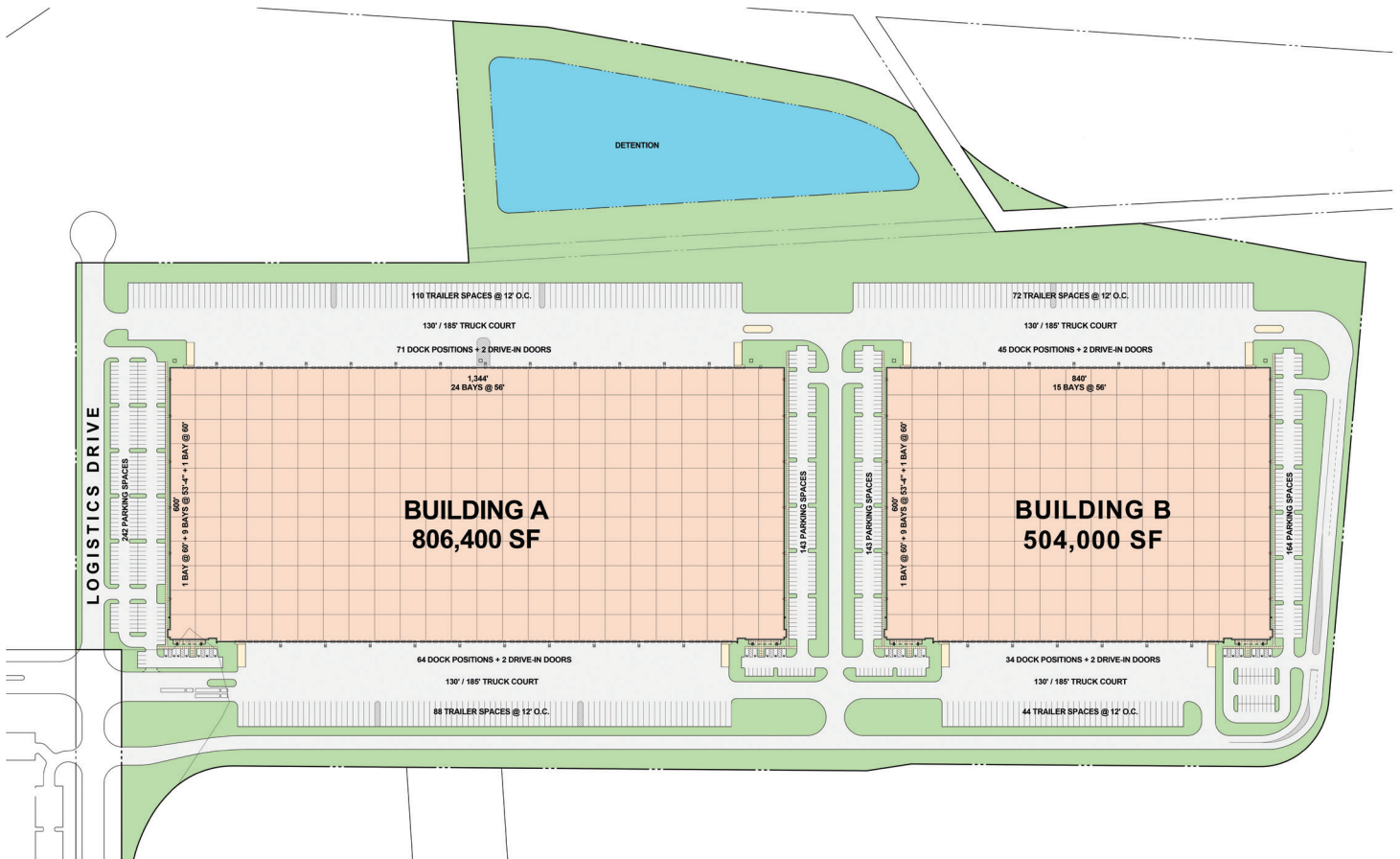
OPTION 1



Square Footage	1,444,800 SF (600' x 2,408')	Drive-In Doors	4 – 12' x 16' drive-in doors
Configuration	Crossdock	Truck Court Depth	185' concrete truck apron
Column Spacing	56' wide x 53' 4" deep, with 60' loading bays	Auto Parking	406 auto spaces (expandable)
Slab Thickness	6" Ductilcrete slab	Trailer Storage	360 trailer storage spaces
Clear Height	36'	Sprinkler System	ESFR sprinkler system
Dock High Doors	265 – 9' x 10' dock high doors		

CORE5 LOGISTICS CENTER AT BONNIE VIEW

OPTION 2

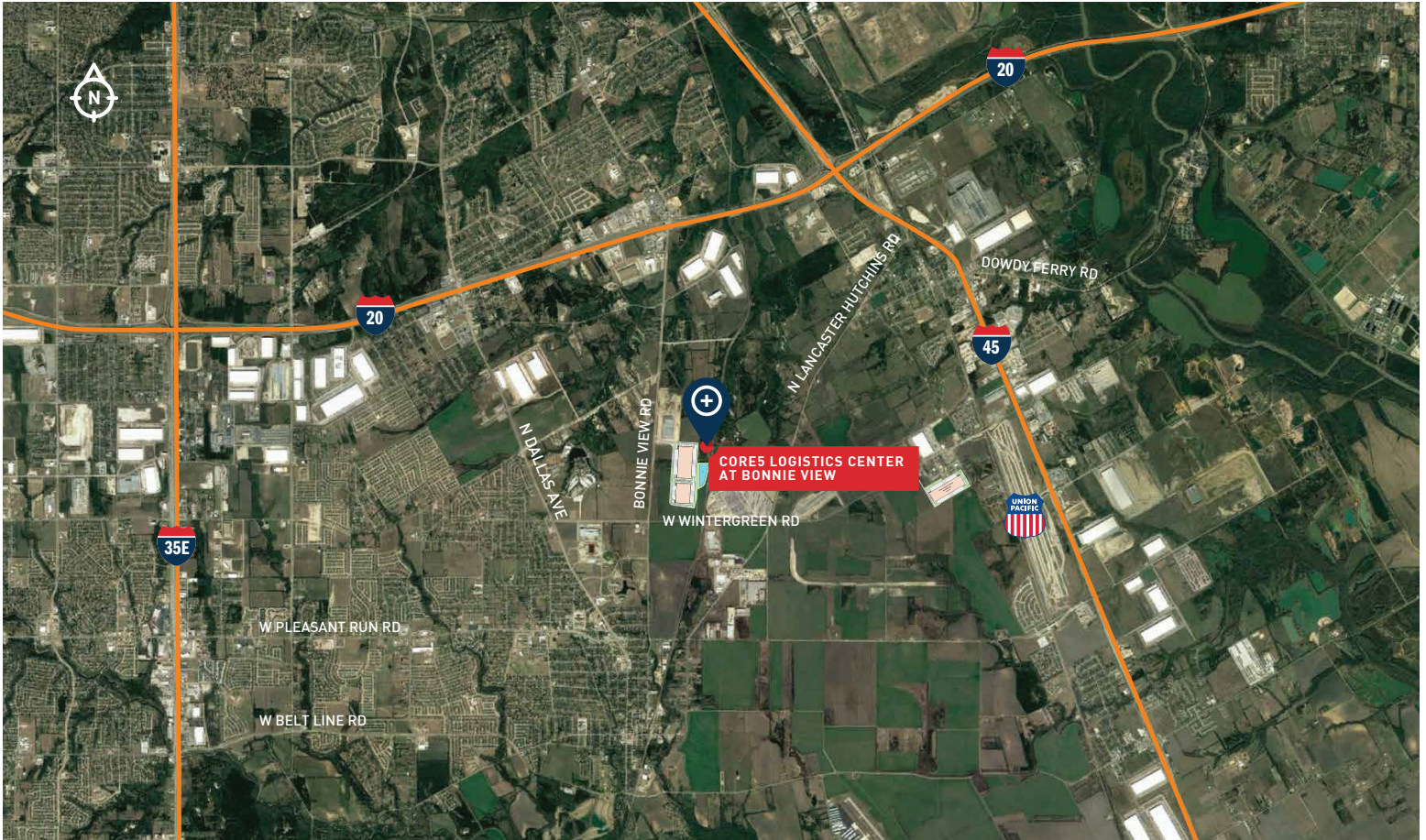


BUILDING A

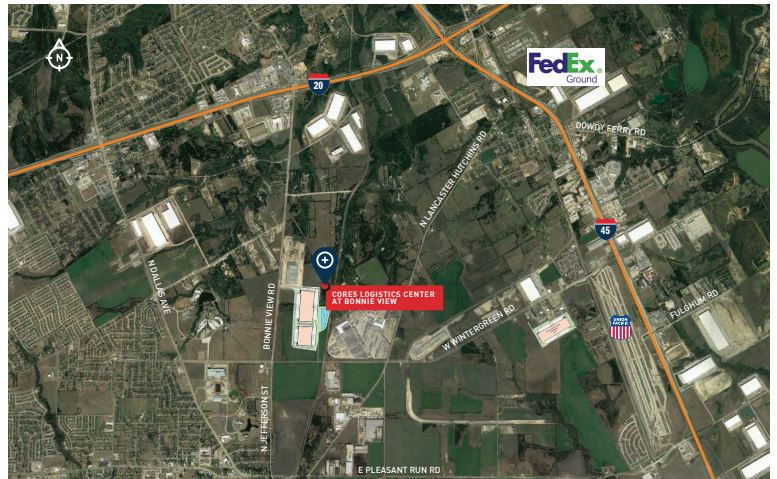
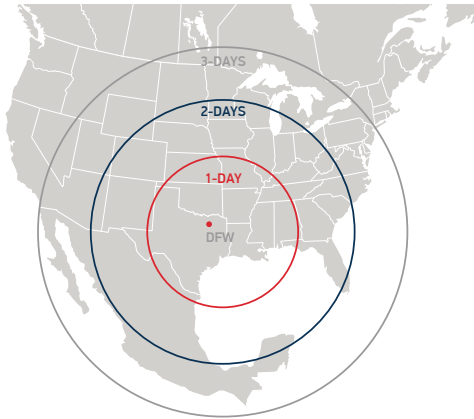
Square Footage	806,400 SF (600' x 1,344')
Configuration	Crossdock
Column Spacing	56' wide x 53' 4" deep, with 60' loading bays
Slab Thickness	6" Ductilcrete slab
Clear Height	36'
Dock High Doors	135 – 9' x 10' dock high doors
Drive-In Doors	4 – 12' x 16' drive-in doors
Truck Court Depth	185' concrete truck apron
Auto Parking	385 auto spaces (expandable)
Trailer Storage	198 trailer storage spaces
Sprinkler System	ESFR sprinkler system

BUILDING B

Square Footage	504,000 SF (600' x 840')
Configuration	Crossdock
Column Spacing	56' wide x 53' 4" deep, with 60' loading bays
Slab Thickness	6" Ductilcrete slab
Clear Height	36'
Dock High Doors	79 – 9' x 10' dock high doors
Drive-In Doors	4 – 12' x 16' drive-in doors
Truck Court Depth	185' concrete truck apron
Auto Parking	307 auto spaces (expandable)
Trailer Storage	116 trailer storage spaces
Sprinkler System	ESFR sprinkler system



**DAYS TRUCK
DRIVE TO/FROM
DFW**



Nathan Lawrence

O 214.979.6558
nathan.lawrence@cbre.com

Krista Clark

O 214.979.6501
krista.raymond@cbre.com

Reid Leinbaugh

O 972.762.0980
reid.leinbaugh@cbre.com



John Leinbaugh

Vice President Investments

O 972.362.8730
C 214.534.7899

jleinbaugh@c5ip.com