



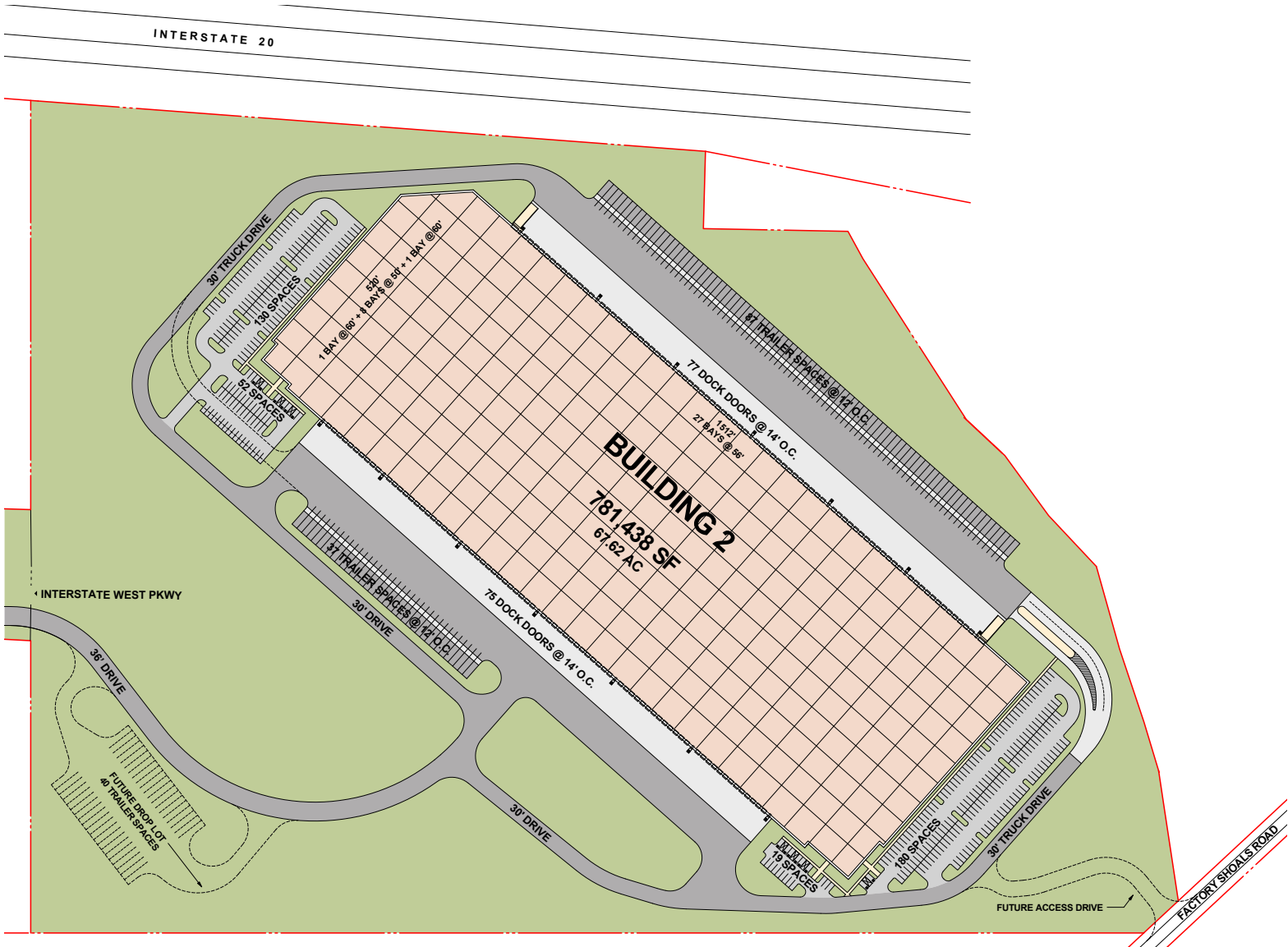
# CORE5 LOGISTICS CENTER AT **INTERSTATE WEST**

440 Interstate West Parkway, Austell, GA 30168



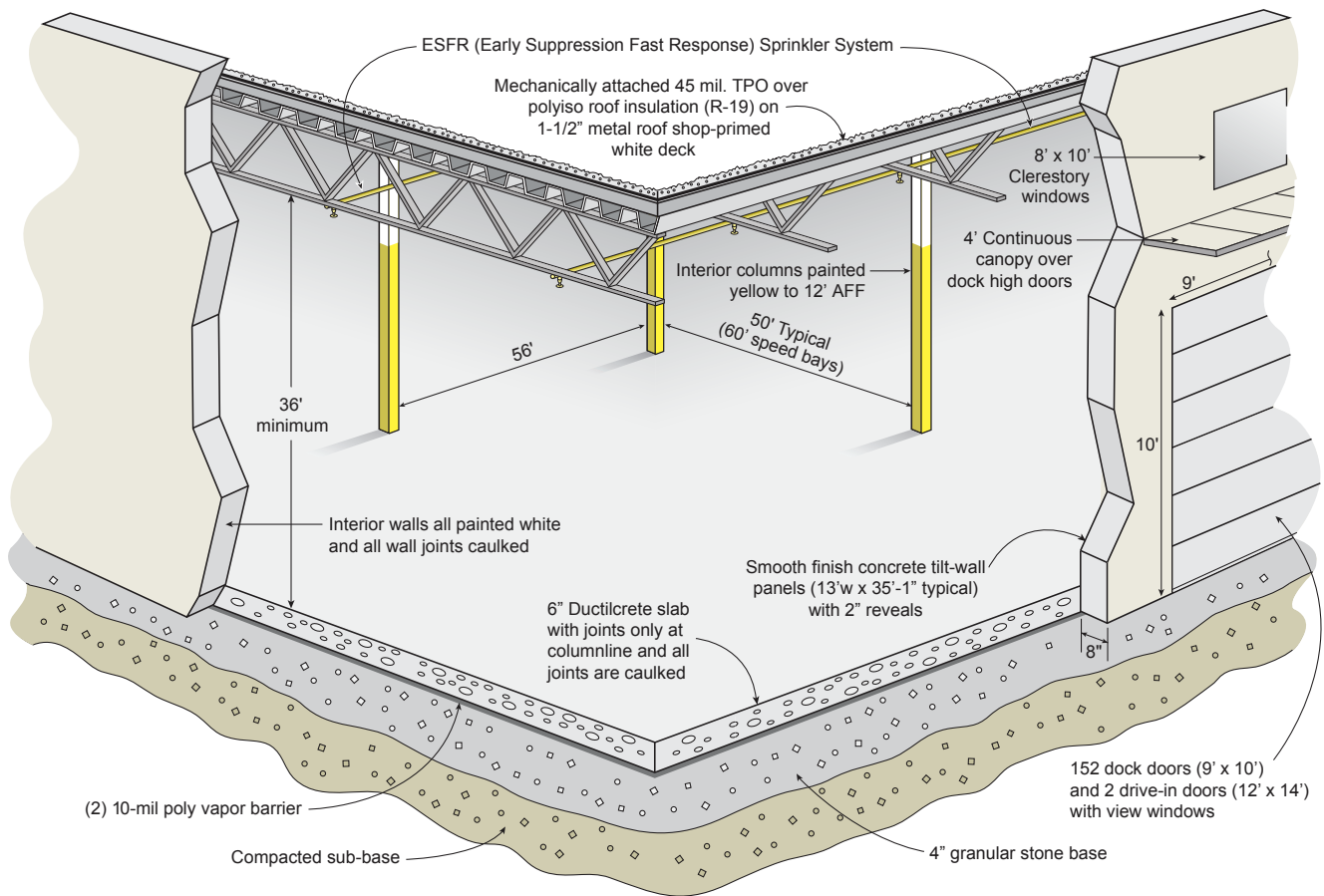
# CORE5 LOGISTICS CENTER AT INTERSTATE WEST

440 Interstate West Parkway, Austell, GA 30168



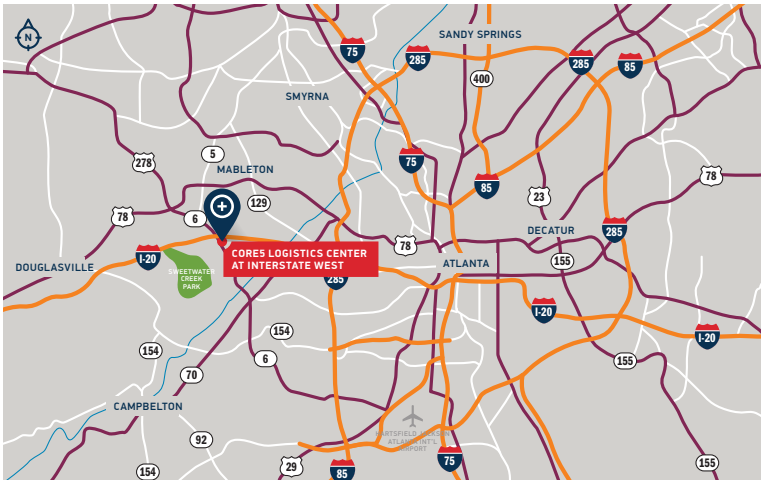
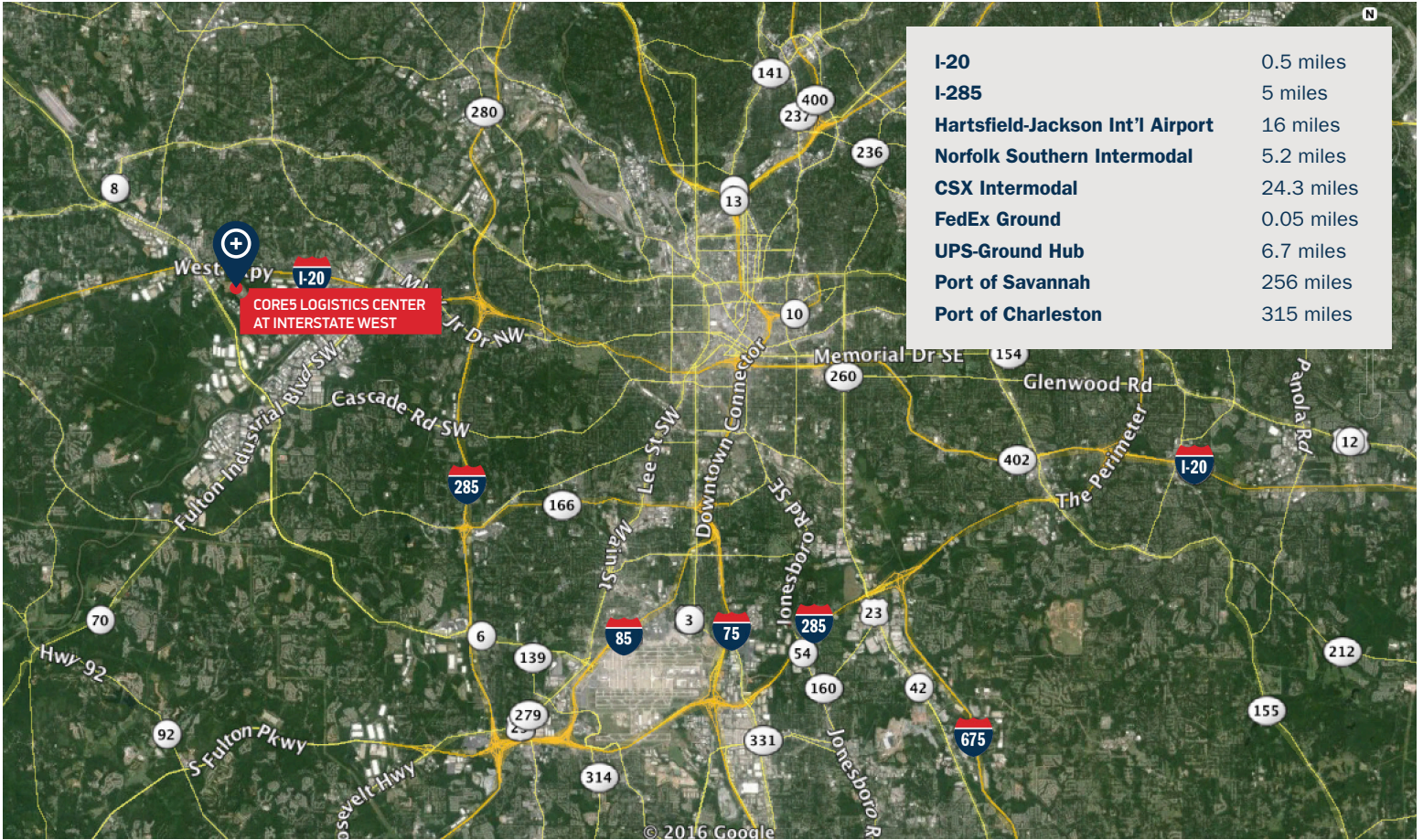
## INCENTIVES

Located within the Cobb County – Six Flags Opportunity Zone, companies are eligible for Job Tax Credits of up to \$3,500 per new job created. These credits are used to offset Georgia income tax liability and payroll withholding tax and can be taken for five (5) years.

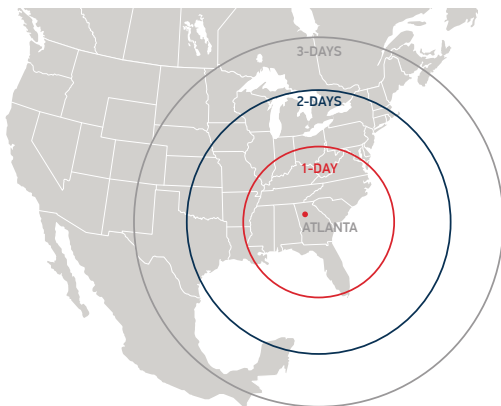


## BUILDING SPECIFICATIONS

<b>Square Footage</b>	781,438 SF (520' x 1,512')
<b>Site Area</b>	67.62 acres
<b>Configuration</b>	Crossdock
<b>Slab Thickness</b>	Ductilcrete slab
<b>Column Spacing</b>	56' wide x 50' deep, with 60' loading bays (+/- 29,120 SF bays)
<b>Clear Height</b>	36' clear minimum
<b>Dock High Doors</b>	152 – 9' x 10' insulated dock high doors
<b>Drive-In Doors</b>	2 – 12' x 14' ramped, drive-in doors
<b>Truck Court Depth</b>	185' deep full concrete truck court
<b>Auto Parking</b>	381 auto spaces
<b>Trailer Storage</b>	124 trailer storage locations with the ability to expand to 164 trailer spaces
<b>Electrical</b>	277/480 volt, 3 phase
<b>Sprinkler</b>	ESFR sprinkler system



**DAYS TRUCK  
DRIVE TO/FROM  
ATLANTA**



FOR MORE INFORMATION, CONTACT:

**Rodney Davidson**  
Vice President Investments

O 404.262.5432  
C 678.524.8812

[rdavidson@c5ip.com](mailto:rdavidson@c5ip.com)



© Copyright 2016 Core5 Industrial Partners, LLC. All rights reserved. CORE5, CORE5 INDUSTRIAL PARTNERS, and the stylized "C" CORE5 INDUSTRIAL PARTNERS design / logo are service marks of Core5 Industrial Partners, LLC for its real estate services, namely, acquisition, rental, brokerage, development, leasing, and management of industrial real estate property. These marks may not be used without express permission of Core5 Industrial Partners, LLC.