



# BOURBON LOGISTICS CENTER 2

316 Clermont Road, Shepherdsville, Kentucky



LEASING AGENT

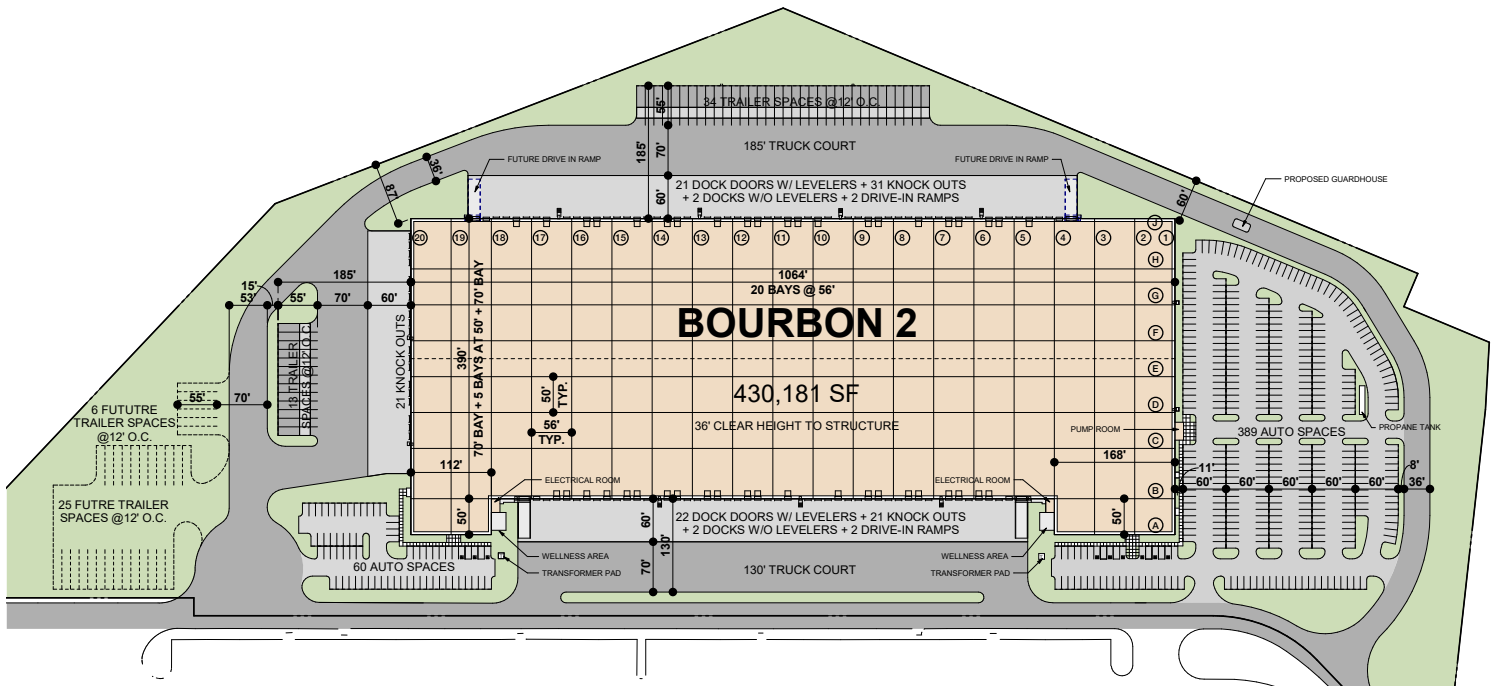


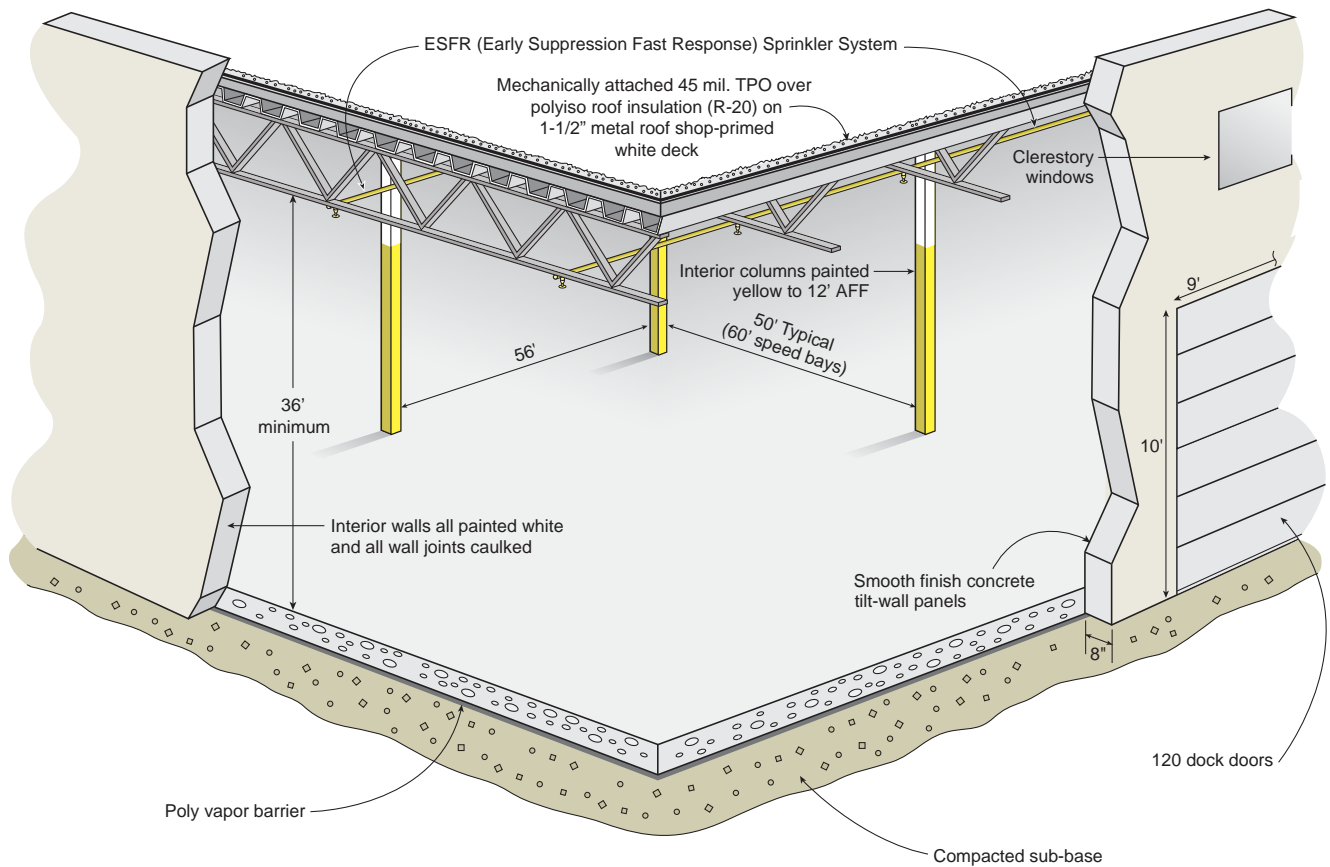
DEVELOPER

# BOURBON LOGISTICS CENTER 2

Shepherdsville, Kentucky

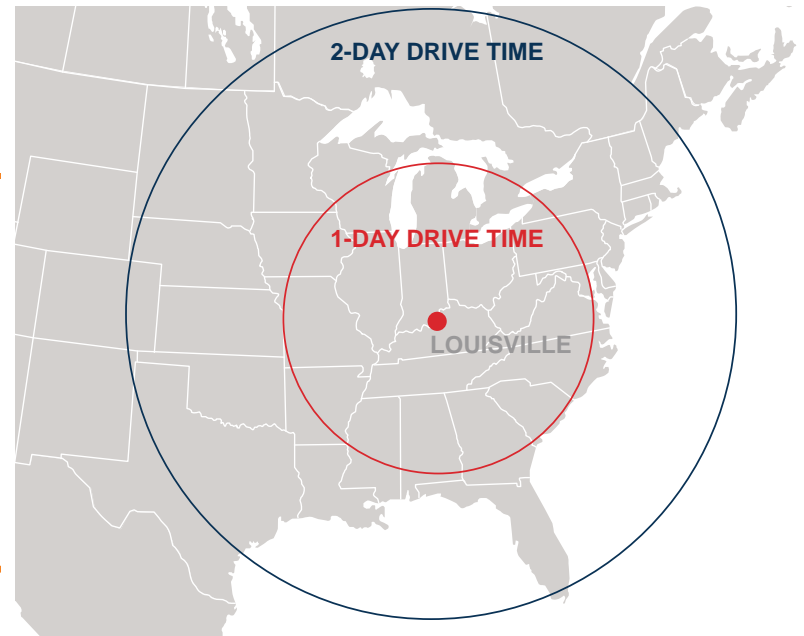
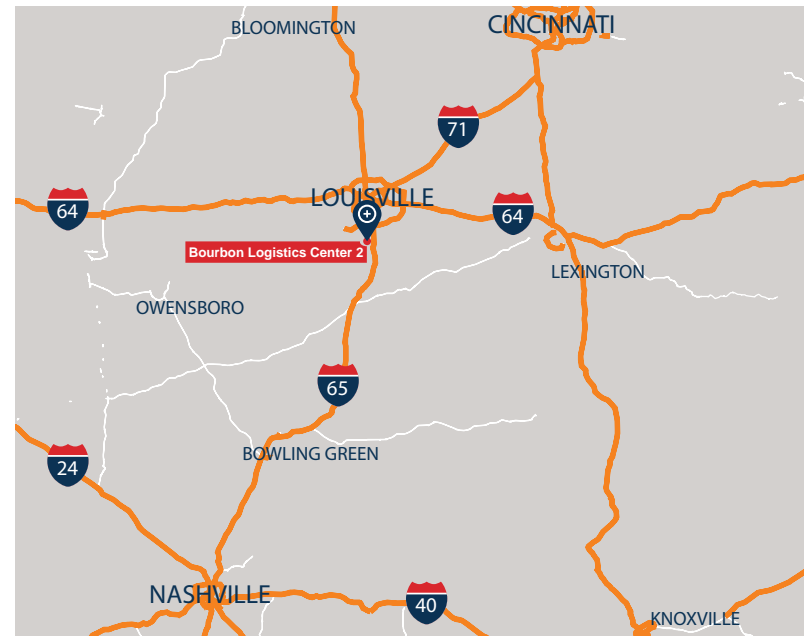
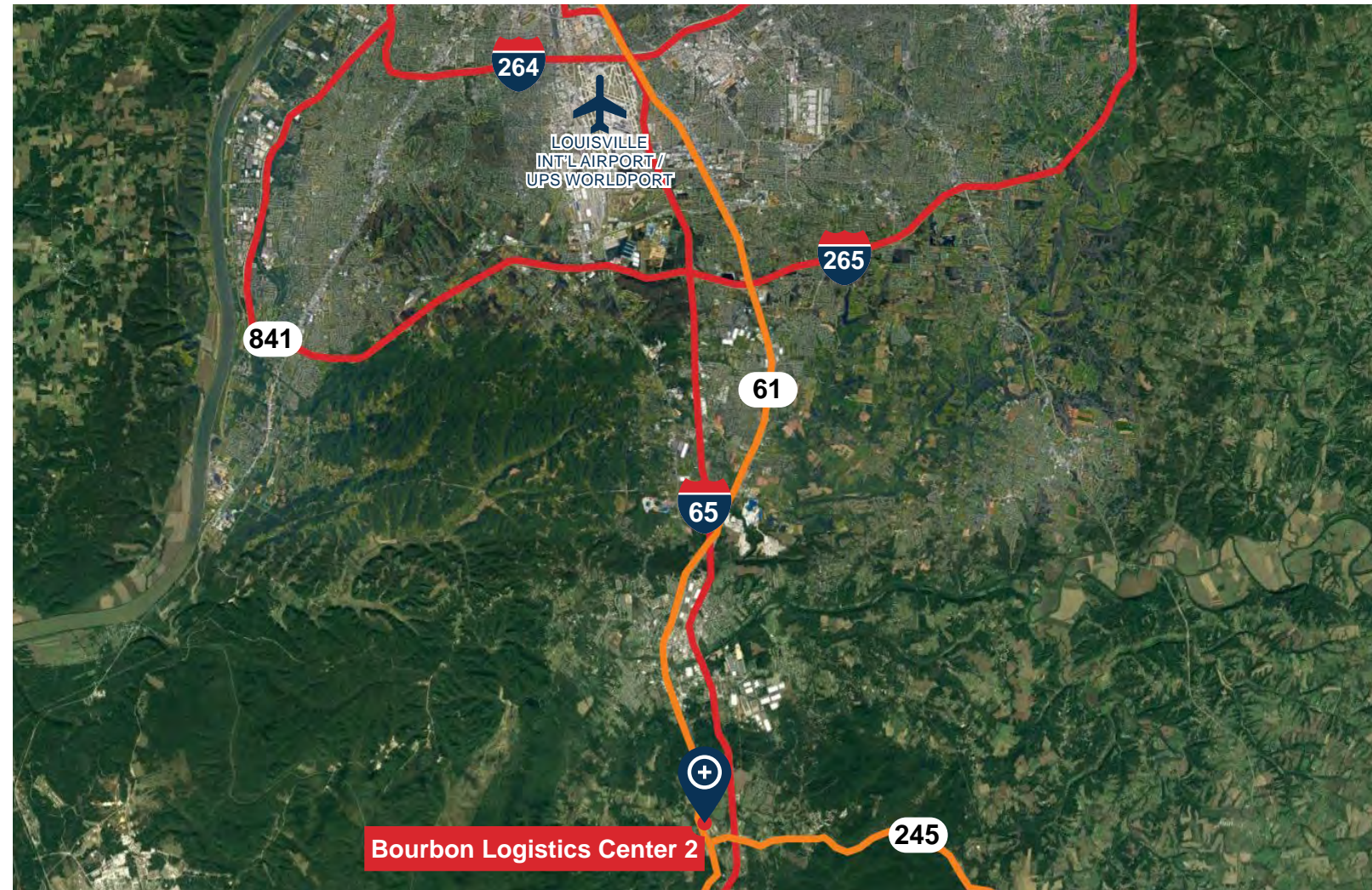
Bourbon Logistics Center 2 is positioned less than one mile from I-65 at KY-245 in Shepherdsville, Kentucky. The location provides superior access to multiple markets. UPS Worldport is 17 miles from the site, providing strategic logistics opportunities to the end-user.





## BUILDING SPECIFICATIONS - BOURBON 2

Square Footage	430,181 SF
Site Area	29.76 acres
Column Spacing	56' wd x 50' dp (typical) with 60' speed bays
Clear Height	36'
Dock Doors	43 (expandable)
Drive-In Doors	2 (expandable)
Truck Court Depth	185' / 130'
Auto Parking	449 spaces (expandable)
Trailer Storage	47 (expandable)
Lighting	LED
Sprinkler	ESFR sprinkler system



**Doug Armbruster**  
 Senior Vice President and Managing Director  
 O 859.287.3707  
 C 513.235.3933  
 darmbruster@c5ip.com



**Powell Spears, SIOR**  
 Managing Director  
 O 502.394.2509  
 C 502.419.7391  
 powell.spears@am.jll.com

**Matt Hartlage, SIOR**  
 Managing Director  
 O 502.394.2517  
 C 502.807.5339  
 matt.hartlage@am.jll.com